

Dark Lilac Cross Stitch Chart

Created 09/01/2006

<http://www.darklilac.com>

This chart is covered by the Creative Commons ShareALike License 2.0. For more information see: <http://creativecommons.org/licenses/by-nc-sa/2.0/>



Stitch Count: 95 x 67

Thread Count: 2 colors

14 count: 6.8 x 4.8 in

25 count: 3.8 x 2.7 in

16 count: 5.9 x 4.2 in

28 count: 3.4 x 2.4 in

18 count: 5.3 x 3.7 in

32 count: 3 x 2.1 in

22 count: 4.3 x 3 in

| Symbol | Stitches per Color | DMC | Color |
|--------|--------------------|-----|-------|
| x | 2,179 | 310 | Black |

10

20

30

40

50

60

10

20

30

40

50

60

67



10

20

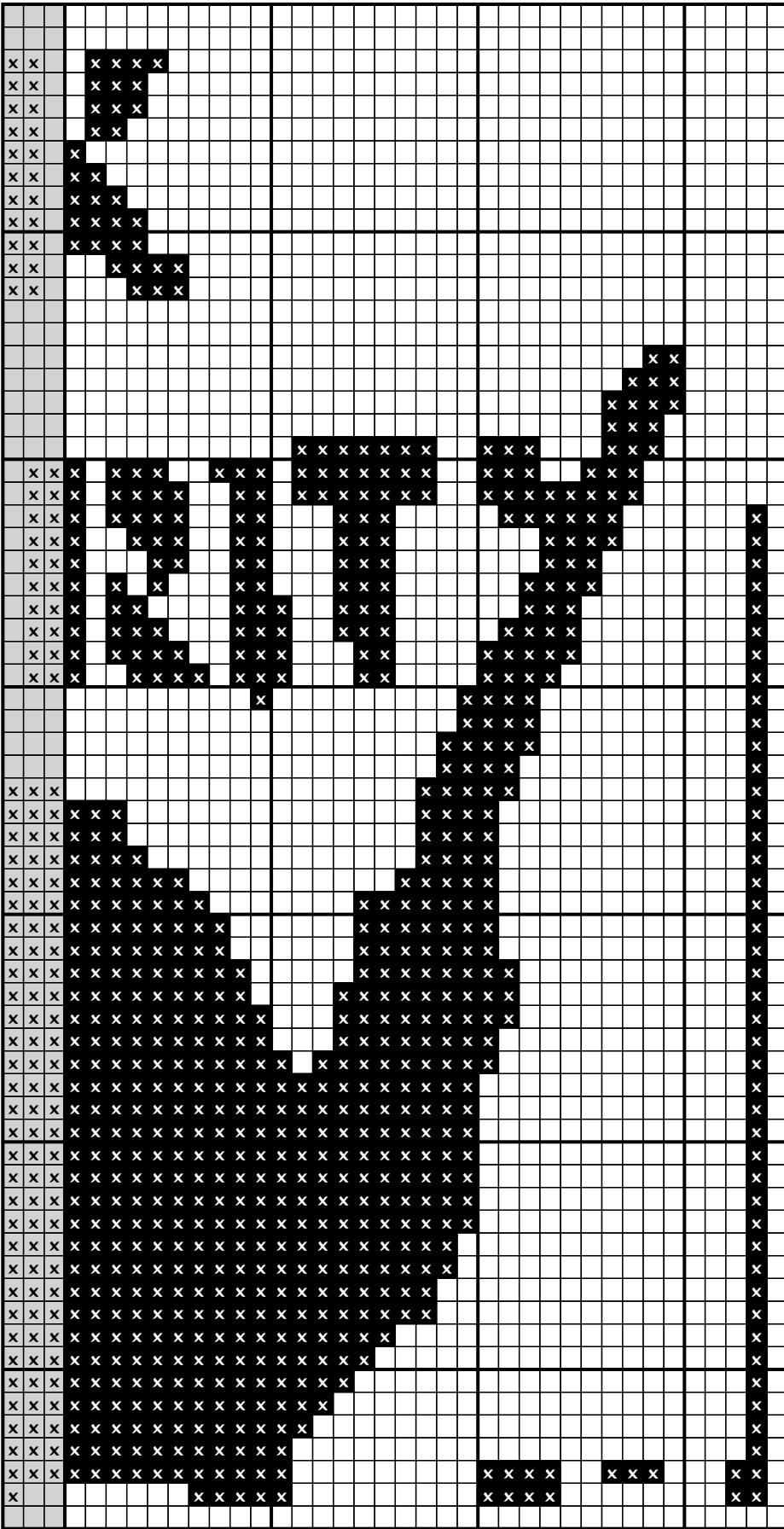
30

40

50

60

67



Appendix

